

## **Plot to File Procedures for Sending Plots to FOTEX**

[sales@fotex.com.au](mailto:sales@fotex.com.au)

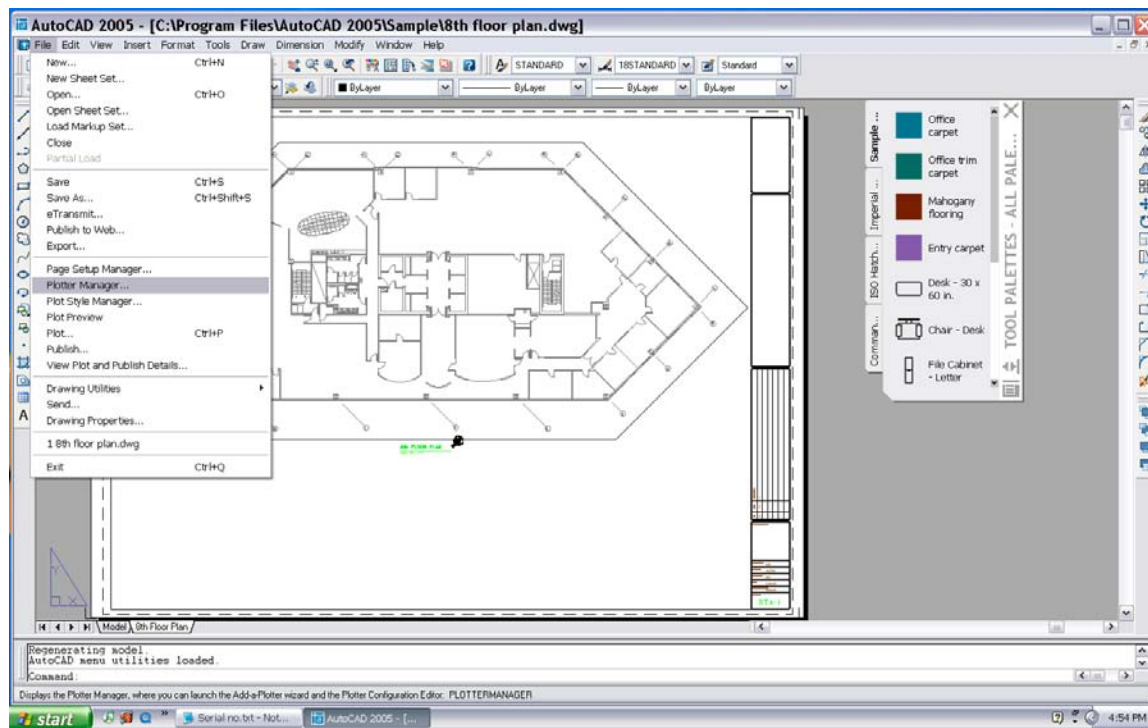
[www.fotex.com.au](http://www.fotex.com.au)

**FOTEX Document Copy Centre  
314 King Street  
NEWTOWN 2042**

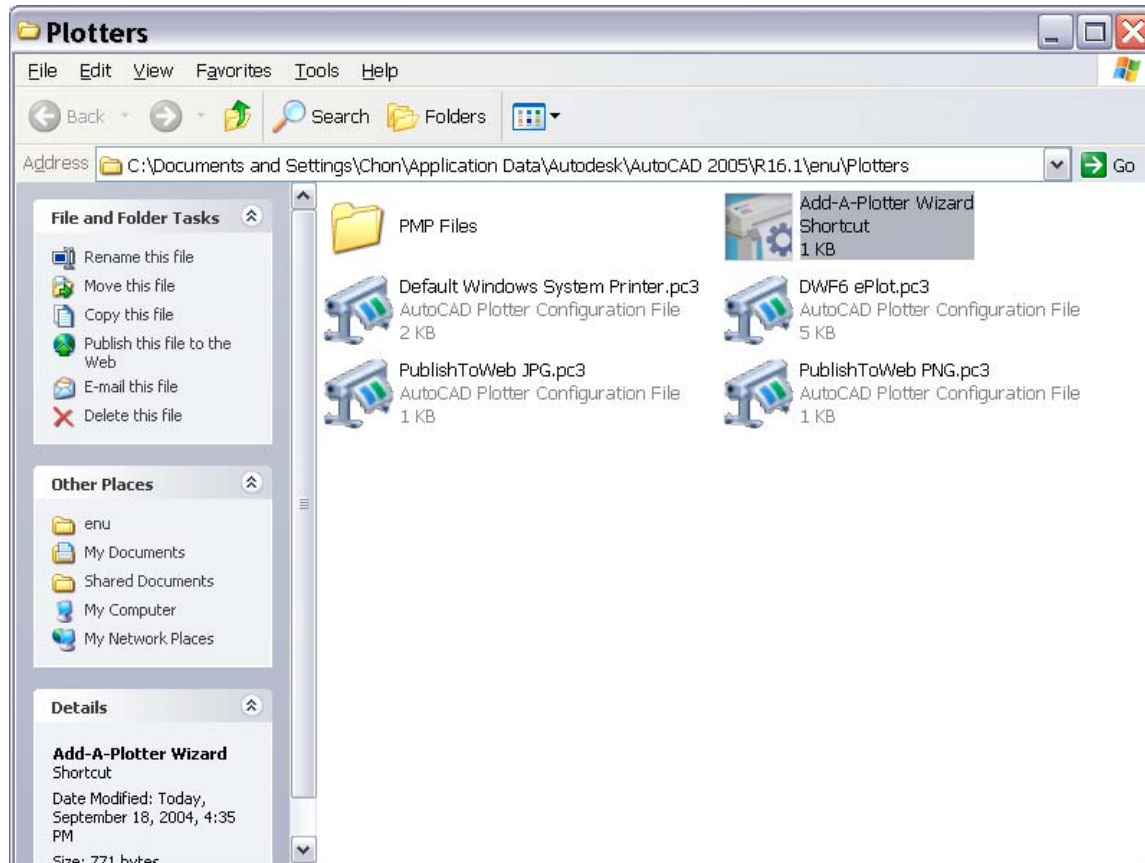
**Phone: 02 9550 1829**

**Fax: 02 9550 1369**

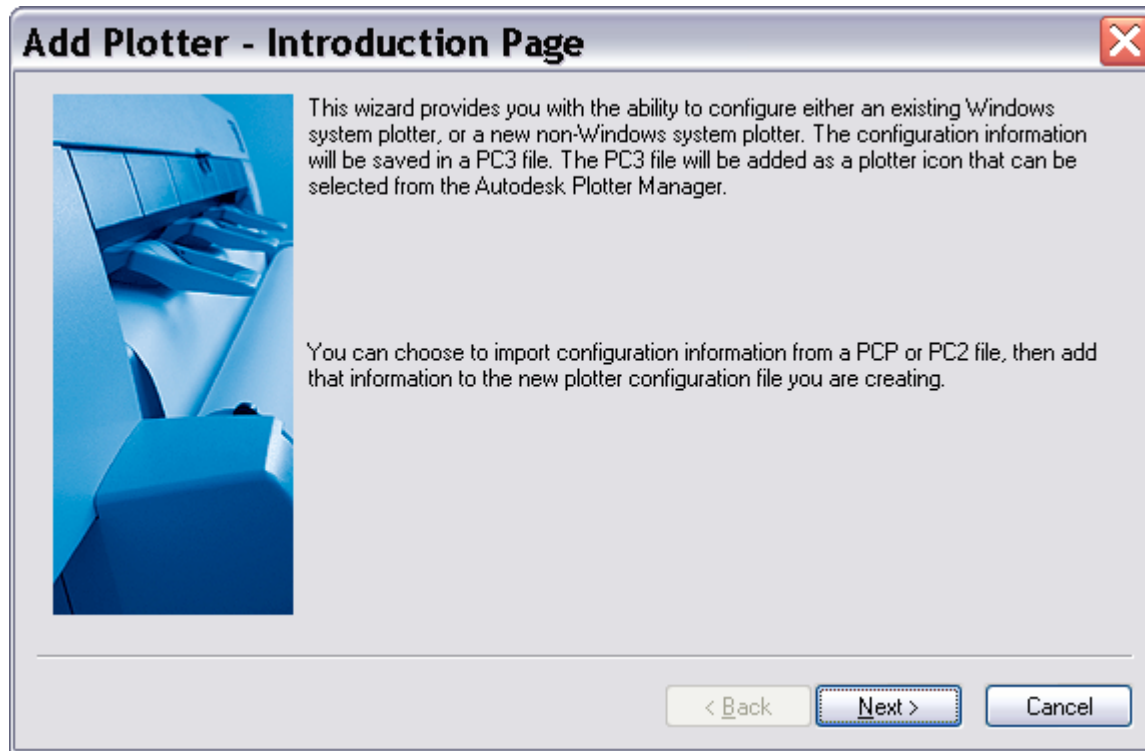
Add a New Plotter by selecting Plotter Manager from the File Menu.



## Use the Add a Plotter Wizard to Creating the New Plotter for Plot to File



## Plotter Wizard



## Add Plotter - Begin



► **Begin**

Network Plotter

System Printer

**Plotter Model**

Select Driver

Import Pcp or Pc2

Ports

Plotter Name

Finish



To configure a new plotter, select one of the following:

**My Computer**

All settings will be configured by an Autodesk Heidi plotter driver, and managed by this computer.

**Network Plotter Server**

All settings will be configured by an Autodesk Heidi plotter driver, and managed by a plotter server.

**System Printer**

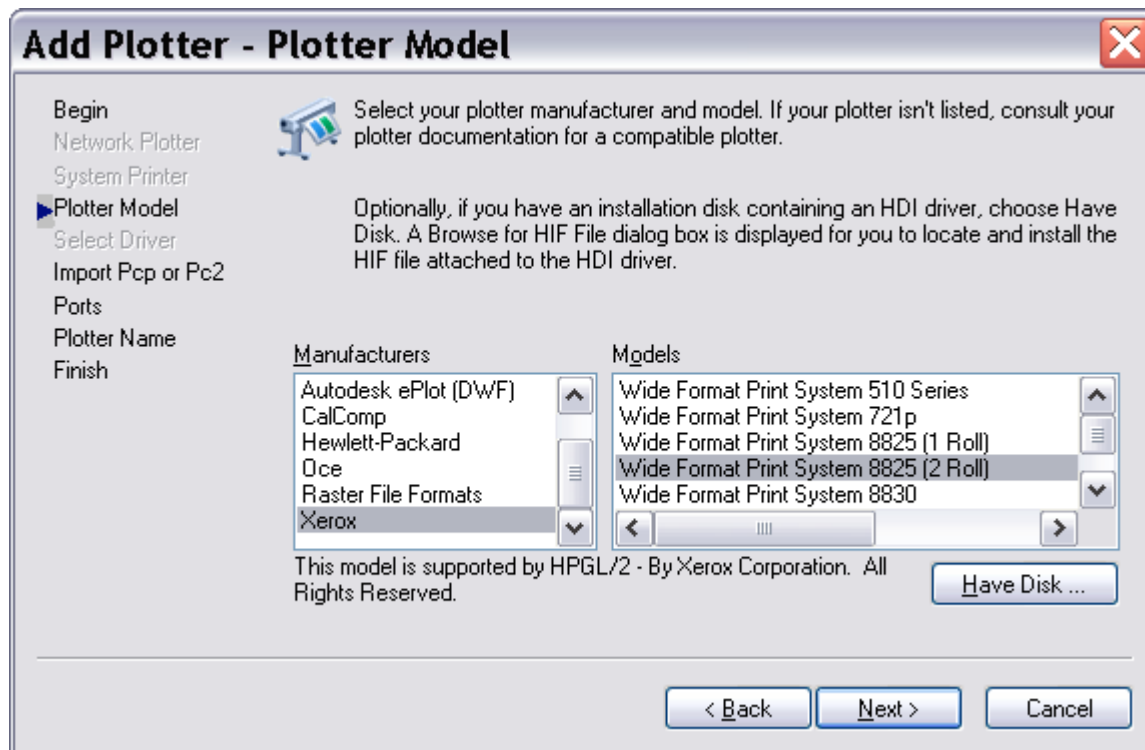
Use a configured Windows system printer driver, and apply different default values for AutoCAD 2005 vs. other Windows applications.

< **Back**

**Next** >

**Cancel**

Select the Xerox Wide Format Print System – 8825 or 8830 driver



## Add Plotter - Import Pcp or Pc2



- Begin
- Network Plotter
- System Printer
- Plotter Model
- Select Driver
- ▶ Import Pcp or Pc2
- Ports
- Plotter Name
- Finish



To import plotter specific information from a previously saved PCP or PC2 file, choose Import File. Paper size, plot optimization level, network share names, and port names can be imported into the new PC3 file.

Import File ...

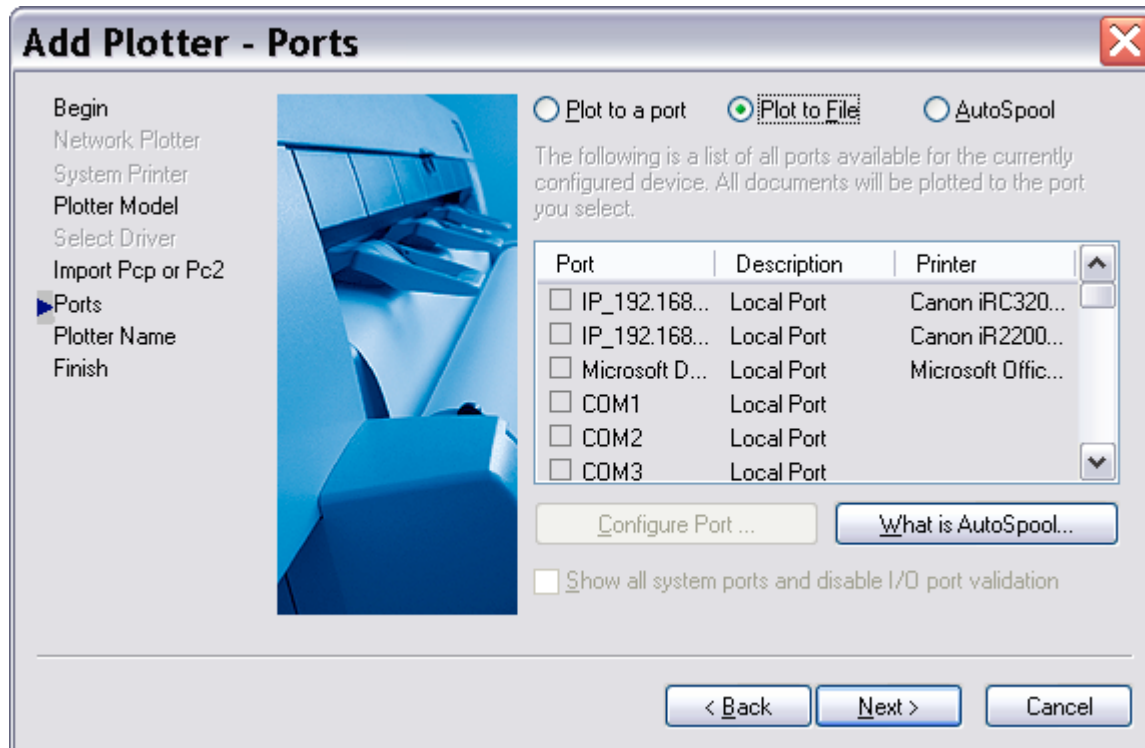
NOTE: Use the Add Plot Style Table wizard to import pen assignment information. Use the Import PCP/PC2 Settings wizard to import PCP or PC2 page setup information.

< Back

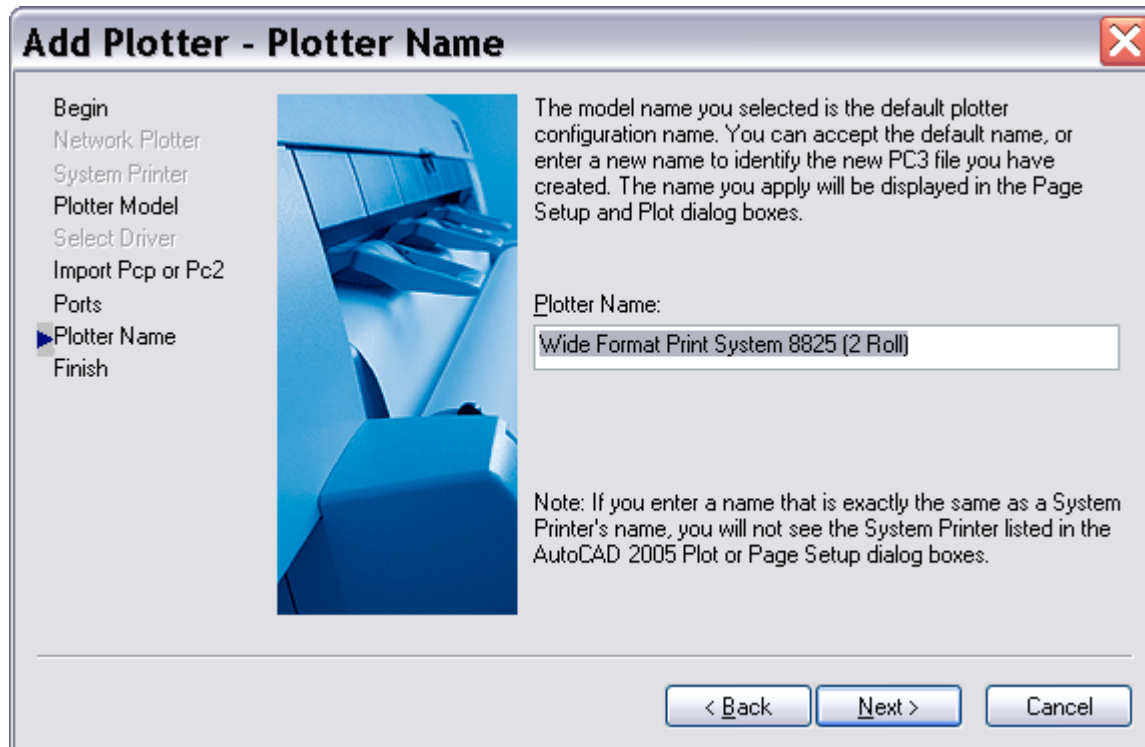
Next >

Cancel

Select the **Plot to File** Radio Button.

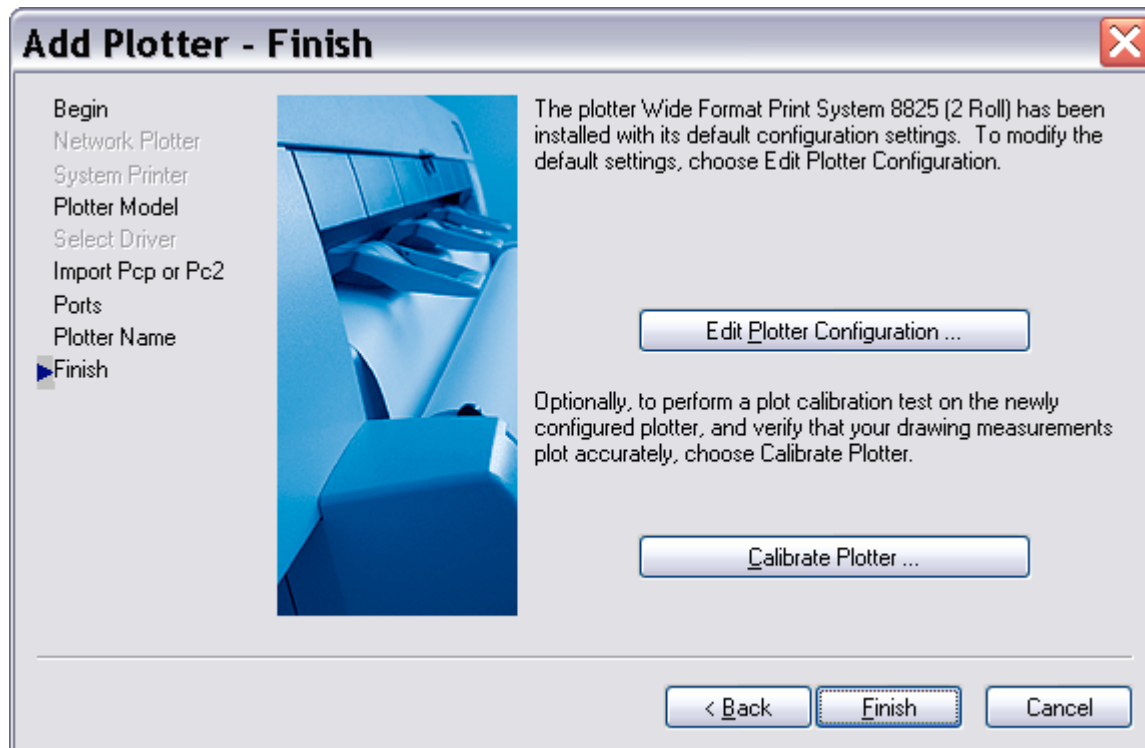


**A Unique Name can be assigned for the Plotter, otherwise; press next.**

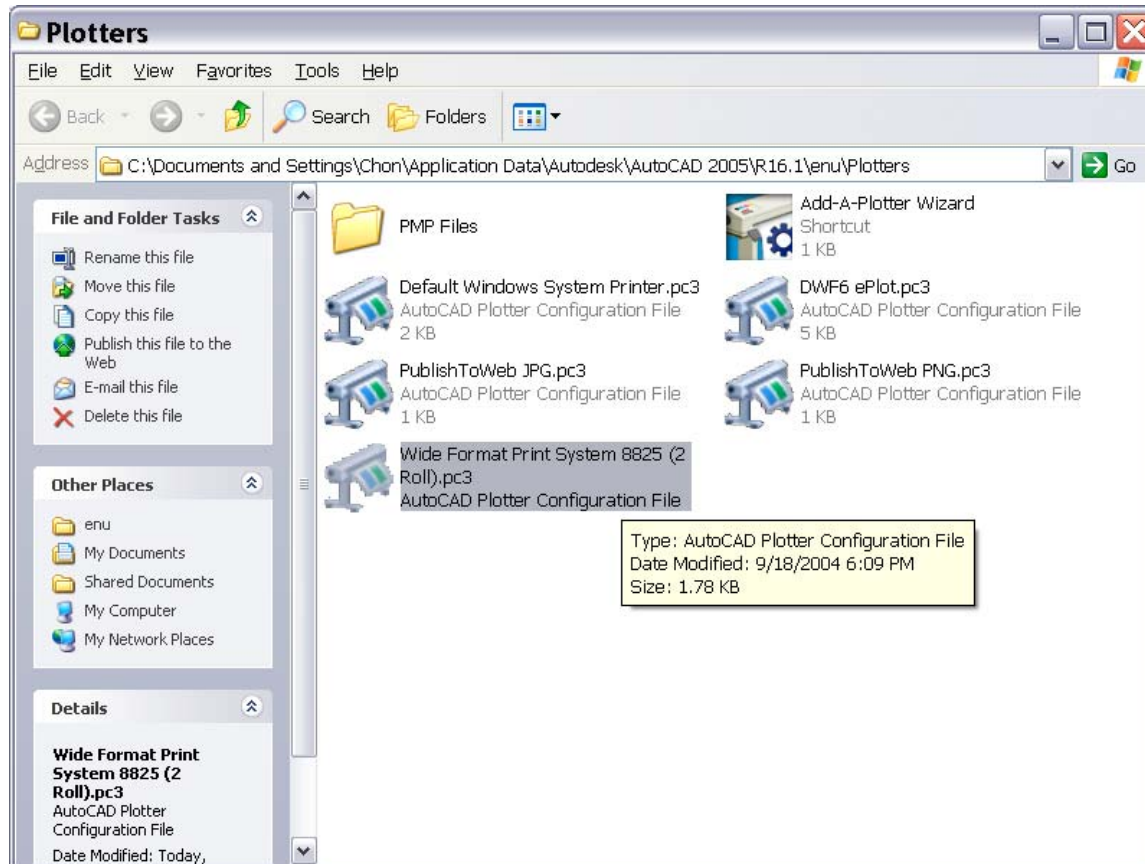


Click on Finish

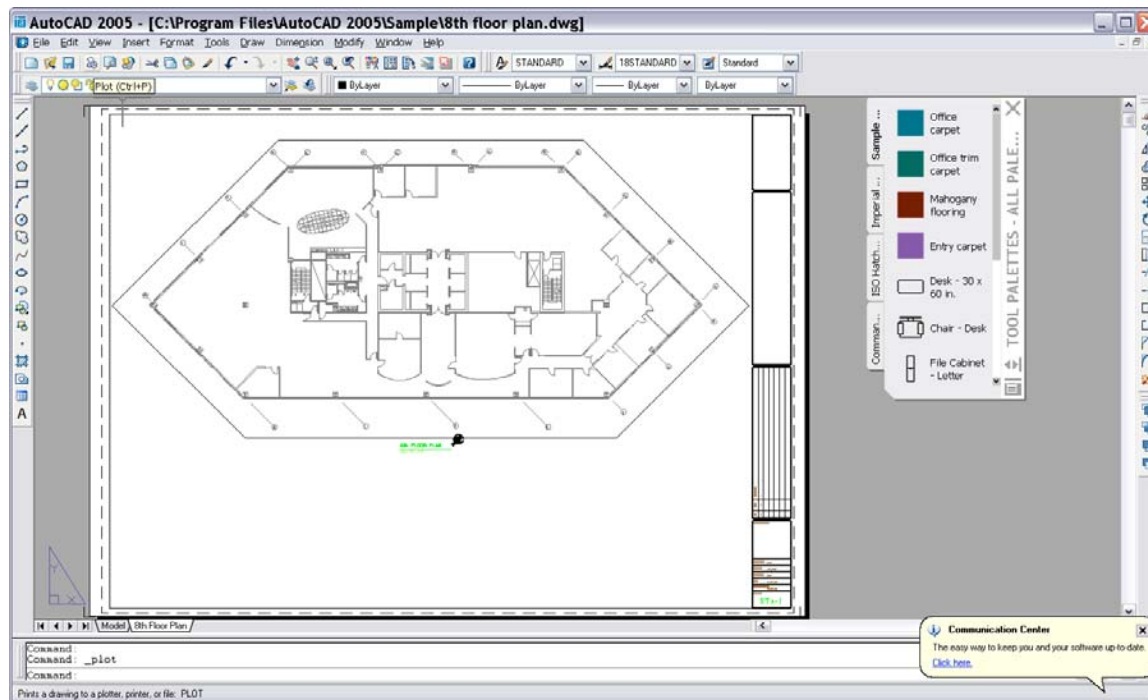
This is the final step of adding a plotter.



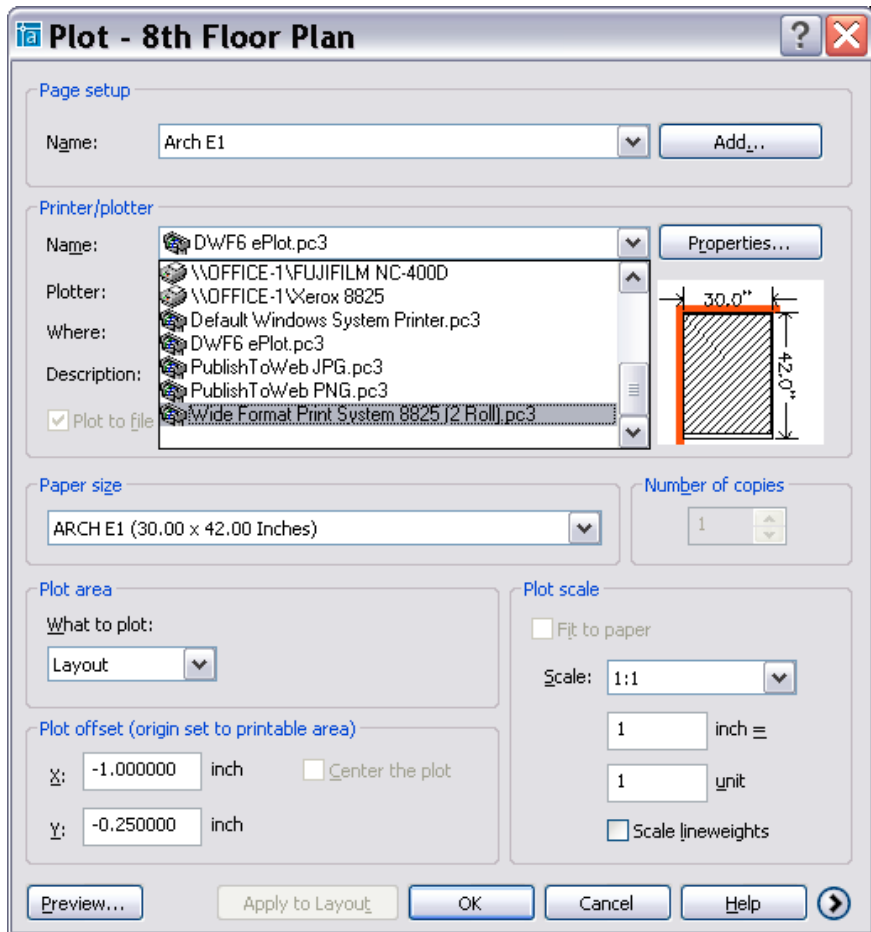
Go to the File Menu and then Plotter Manager.  
Plot to File Plotter is now available.



## Creating the Plot Files by Selecting the Plot Command



**Make sure the Plot Device is the Wide Format Print System 8825 (2 Roll).pc3 and that the Plot to File Option is Selected. Also check to see the Path where it will be saved.**



Plot Settings such as Paper Size, Orientation, Plot Area and Scale must now be set.

**Plot - 8th Floor Plan** [?] [X]

**Page setup**

Name: <None> [v] [Add...]

**Printer/plotter**

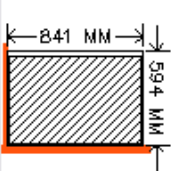
Name: [Wide Format Print System 8825 (2 Roll).pc3] [v] [Properties...]

Plotter: Wide Format Print System 8825 (2 Roll) -XES8- by Xerox...

Where: File

Description:

Plot to file



**Paper size**

ISO A1 (841.00 x 594.00 MM) [v]

**Number of copies**

1 [up] [down]

**Plot area**

What to plot:

Layout [v]

**Plot offset (origin set to printable area)**

X: -6.35 mm  Center the plot

Y: -25.40 mm

**Plot scale**

Fit to paper

Scale: Custom [v]

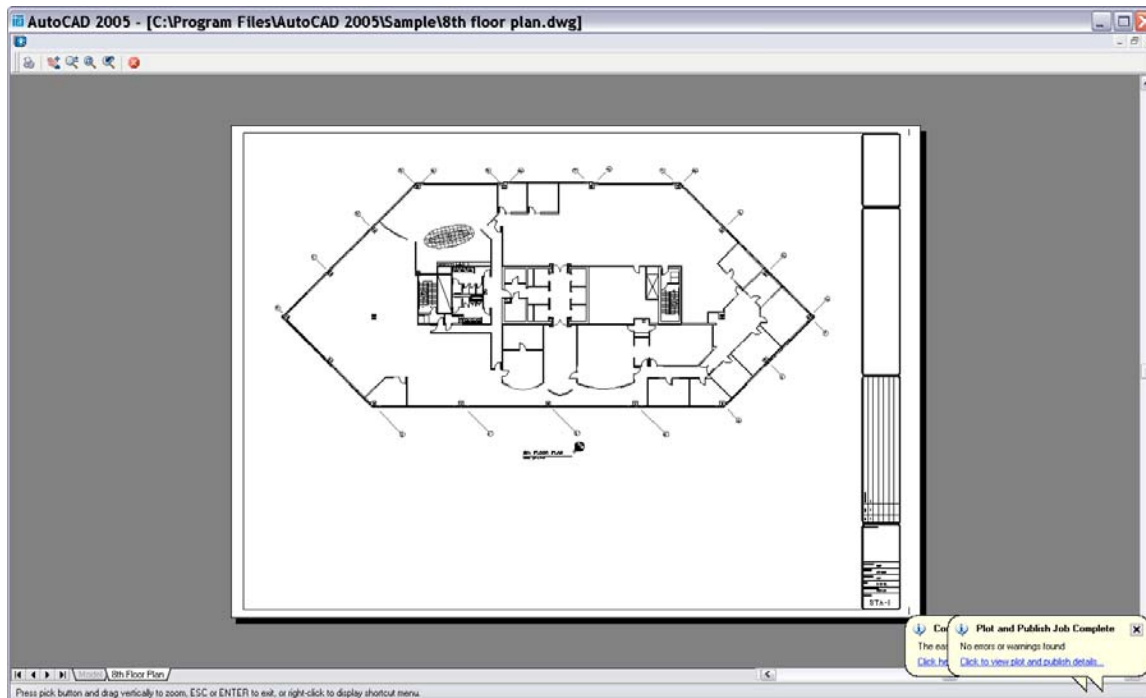
1 mm ≡

0.03937 unit

Scale lineweights

[Preview...] [Apply to Layout] [OK] [Cancel] [Help] [Next]

Use Preview to Verify that the Plot is correct.



**Finalize the plot command by clicking OK.  
You now have created a plot file to be sent to FOTEX.**

**[Sales@fotex.com.au](mailto:Sales@fotex.com.au)**